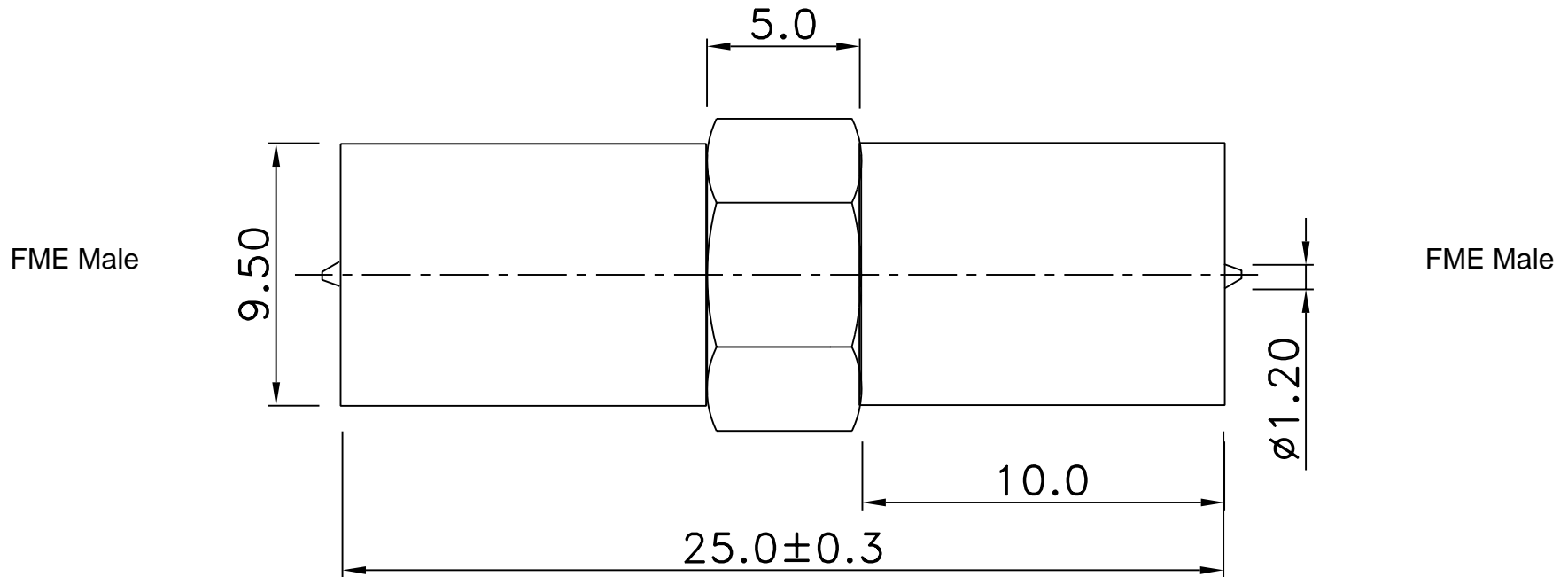


REV	DESCRIPTION	DRAWN	DATE



NO	Description	Q'ty	Material	Finish	UNLESS OTHERWISE SPECIFIED	* MAJOR DIMENSION	APPROVED	Siretta Enabling Industrial IoT			
3	INSULATOR	2	DELRIN	NONE	1.REMOVE ALL BURRS. 2.BREAK ALL CONNERS & EDGES CO.15 MAX. 3.CHAMFER 1ST & LAST THREADS 45°. 4.DIAMETERS ON COMMON CENTERS. TO BE CONCENTRIC WITHIN 0.1 T.I.R. 5.ALL DIMENSIONS ARE AFTER PLATING.	UNLESS OTHERWISE NOTED TOLERANCES 0.5-6=±0.2 6-30=±0.4 30-120=±0.6 120-315=±1.0 ANGLES=±1°	Danny	TITLE <b>FME PLUG TO FME PLUG</b> DRAWING NO. <b>ADAPT/FMEM/FMEM</b>	REV	A	
2	PIN	1	BRASS	GOLD			Checked		Danny	FILE NO.	
1	BODY	1	BRASS	NICKEL			Drawn		Andrew	DRAWN DATE	03/06/17
						SCALE	6/1	UNIT	MM		