

#### Materials Supplied:

- 1x L-shaped bracket (fitted to the antenna)
- 2x spring washers
- 2x M8 nuts
- 2x flat washers
- 1x clamp
- 1x M8 U-bolt

**Required Tools:** 13mm spanner or adjustable wrench.

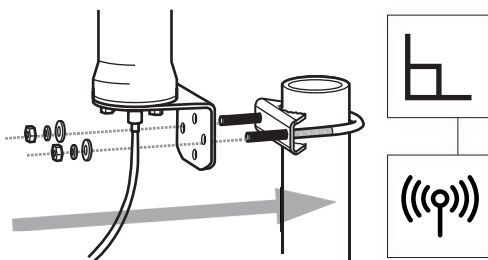
### 1. Preparing the Pole

**Pole Requirements:** Ensure the pole is sturdy and securely anchored. The diameter should be compatible with the supplied clamp and U-bolt (between 30 - 45mm).

### 2. Attaching the Clamp and U-Bolt

**Positioning the Clamp:** Place the clamp around the pole at the desired height (a).

**Securing the U-Bolt:** Thread the U-bolt through the clamp and around the pole (b). Secure with the supplied nuts and washers, ensuring even pressure on both sides (c).



### 3. Mounting the Antenna

**Attaching to the Clamp:** Align the L-shaped bracket with the clamp and secure it using the remaining nuts and washers.

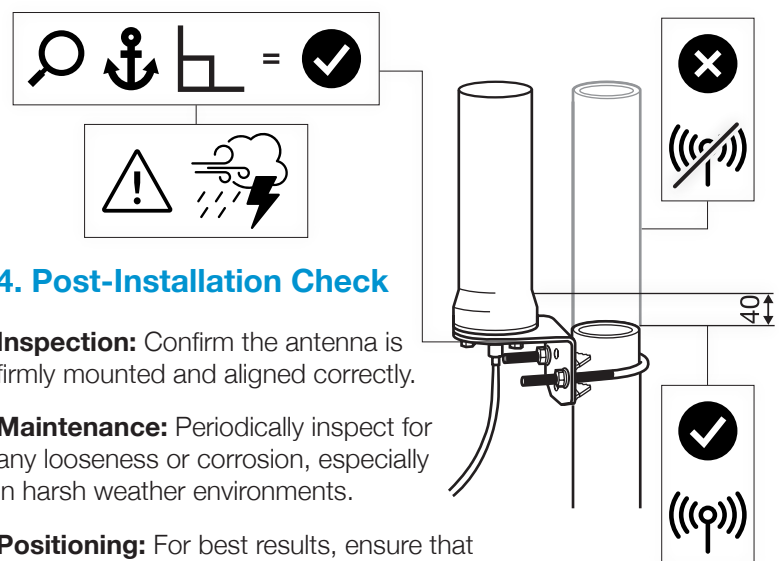
**Alignment:** Adjust the antenna to the desired orientation, ensuring it's vertical for optimal signal reception.

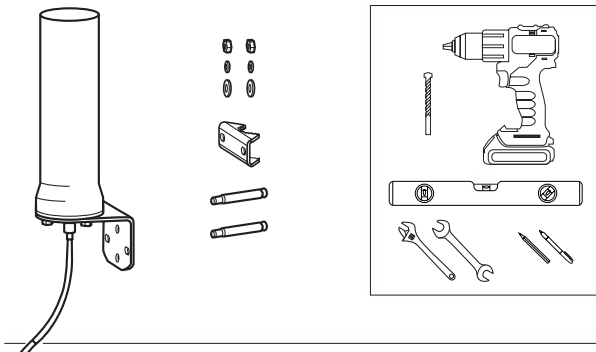
### 4. Post-Installation Check

**Inspection:** Confirm the antenna is firmly mounted and aligned correctly.

**Maintenance:** Periodically inspect for any looseness or corrosion, especially in harsh weather environments.

**Positioning:** For best results, ensure that the top of the pole does not extend more than 40mm below the L-shaped mount.





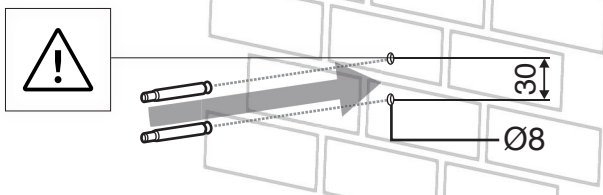
#### Materials Supplied:

- 1x L-shaped bracket (fitted to the antenna)
- 2x spring washers
- 2x M6 nuts
- 2x flat washers
- 1x clamp
- 2x frame anchors

**Required Tools:** Drill, 8mm drill bit, 10mm spanner or adjustable wrench, level, pencil or marker.

## 1. Choosing the Mounting Surface

**Surface Selection:** Ensure the chosen wall surface is even and capable of supporting the antenna's weight. Avoid mounting near metallic objects or other antennas to reduce interference.



## 2. Preparing the Surface

**Marking Drill Points:** Using a level, mark two vertical points 30mm apart where the holes will be drilled.

**Drilling:** Drill two 8mm diameter holes at the marked points. Be cautious to avoid any internal wiring or piping.

#### Inserting Frame Anchors:

Place the frame anchors into the drilled holes.

## 4. Post-Installation Check

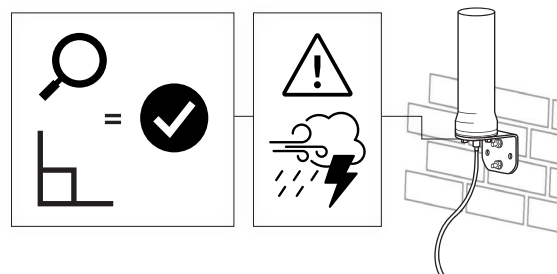
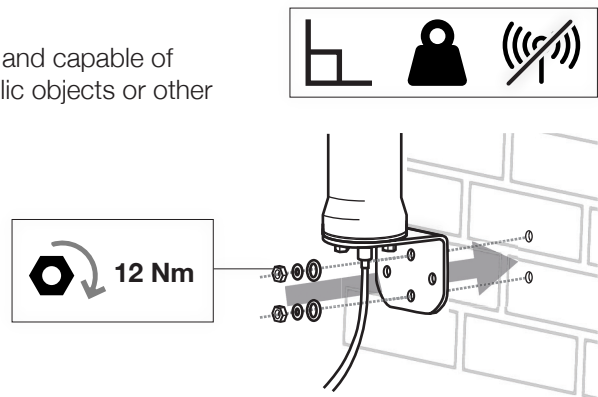
**Inspection:** Verify that the antenna is securely attached and correctly aligned.

**Maintenance:** Regularly check the antenna for stability and signs of wear, especially after severe weather conditions.

## 3. Mounting the Antenna

**Attaching the Bracket:** Align the L-shaped bracket's holes with the frame anchors. Insert the flat washers onto the M6 bolts and secure the bracket to the wall using the spring washers and nuts.

**Final Adjustments:** Ensure the antenna is vertical and tighten the nuts firmly but avoid over-tightening to prevent damage. Siretta's recommended torque for fastening the nuts is 12 Nm or 8.85 ft-lbs.



#### Disclaimers and Waivers

**Safety Disclaimer:** The installation of this antenna should be carried out in accordance with local safety regulations. The manufacturer is not responsible for damages or injuries resulting from improper installation or use.

**Professional Recommendation:** For optimal performance and safety, we recommend installation by a qualified professional. Improper installation may void the warranty and could lead to poor performance or safety hazards.

**Compliance Statement:** Ensure compliance with all local building codes and electrical safety standards. The manufacturer is not liable for any violations of such regulations.

**General/Ongoing Maintenance:** Regular maintenance checks are essential for sustained performance and safety. Failure to conduct these checks could result in unexpected performance issues and safety risks.

**Installation Confirmation:** Upon installation, it is the responsibility of the installer to ensure that the antenna is securely mounted and functioning as intended. The manufacturer is not liable for issues arising from installation errors or oversights.