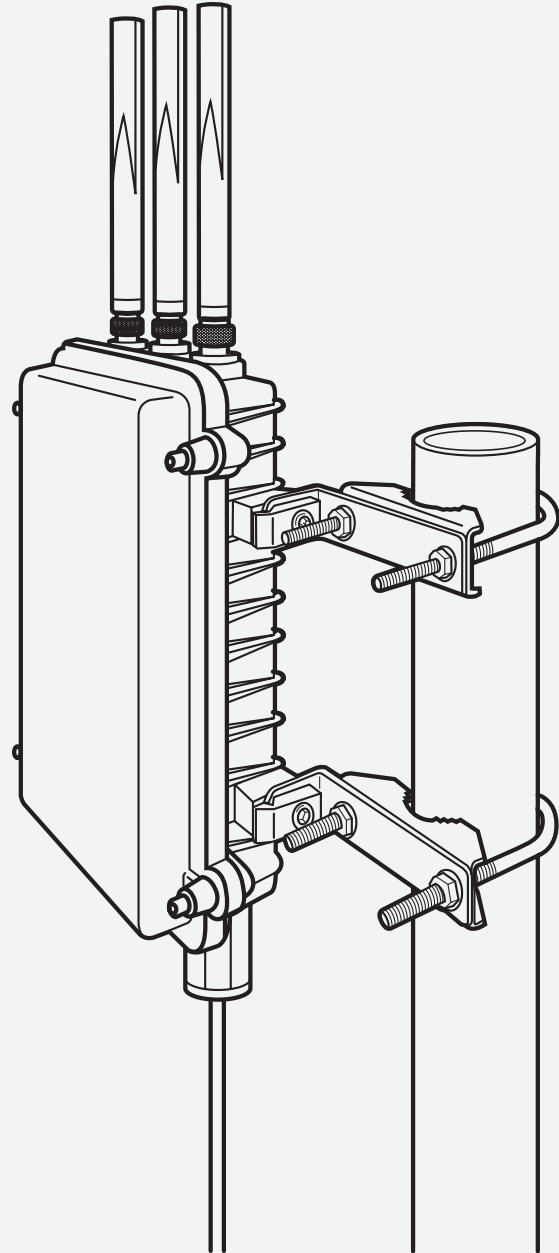




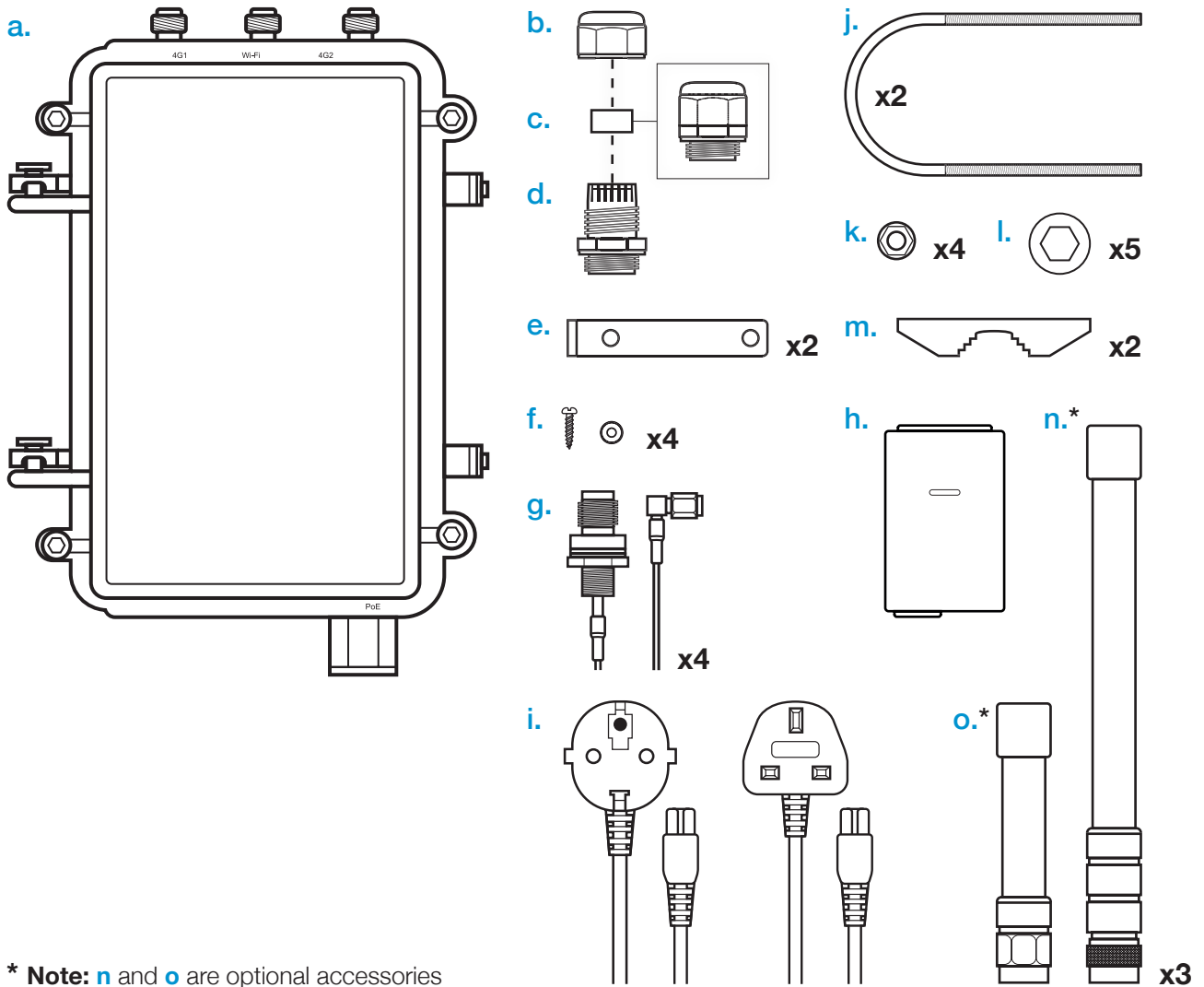
Enabling Industrial IoT



Outdoor Cellular Enclosure

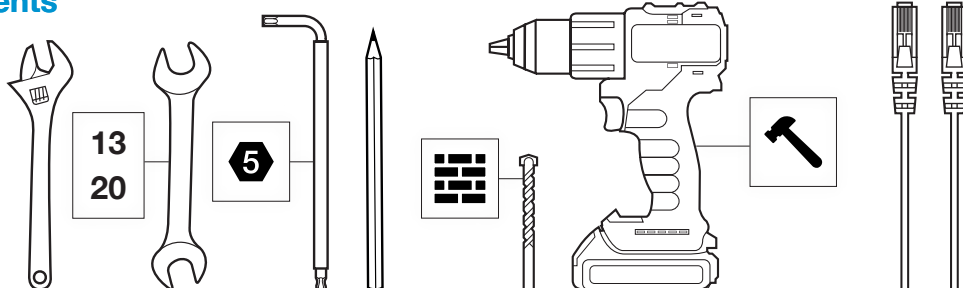
Setup and Installation

Parts List

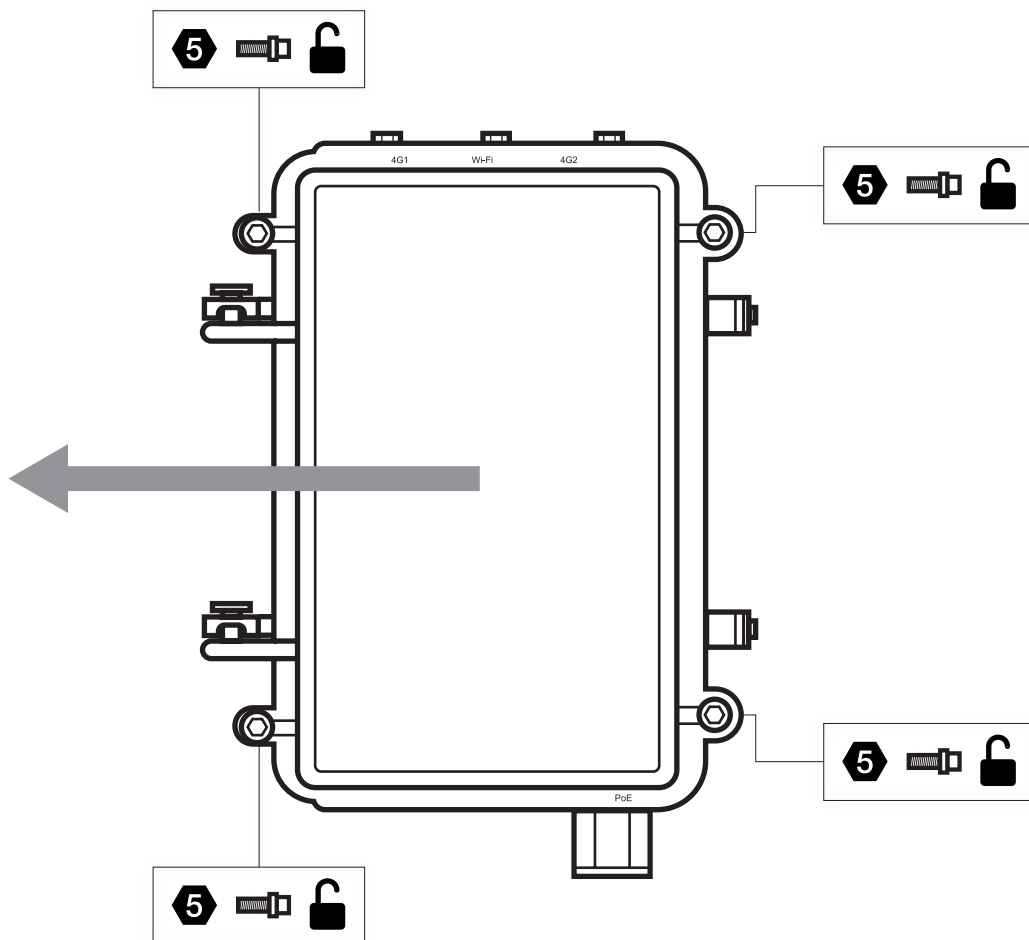


* **Note:** n and o are optional accessories

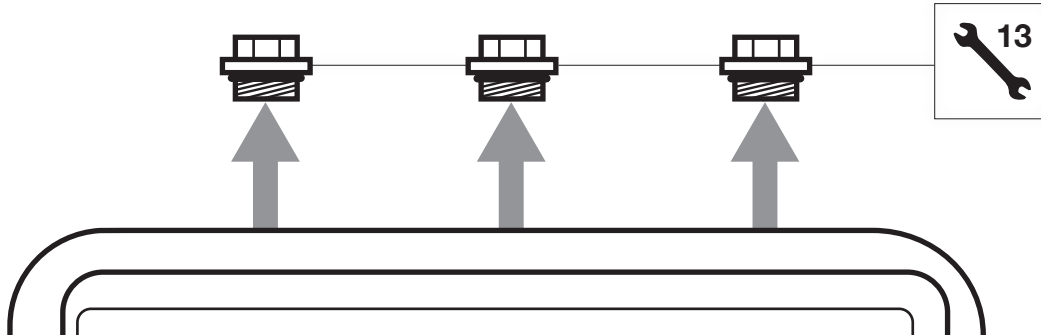
Requirements



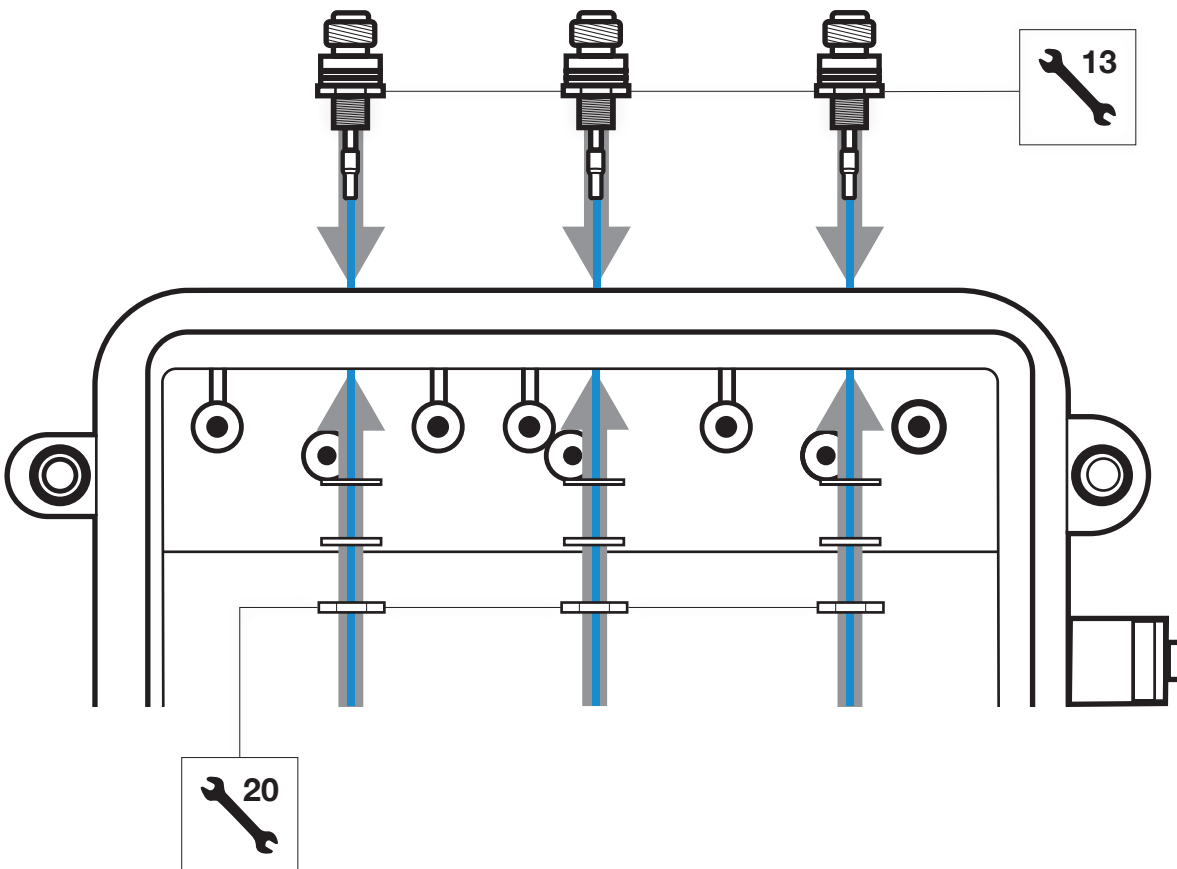
Opening The Enclosure



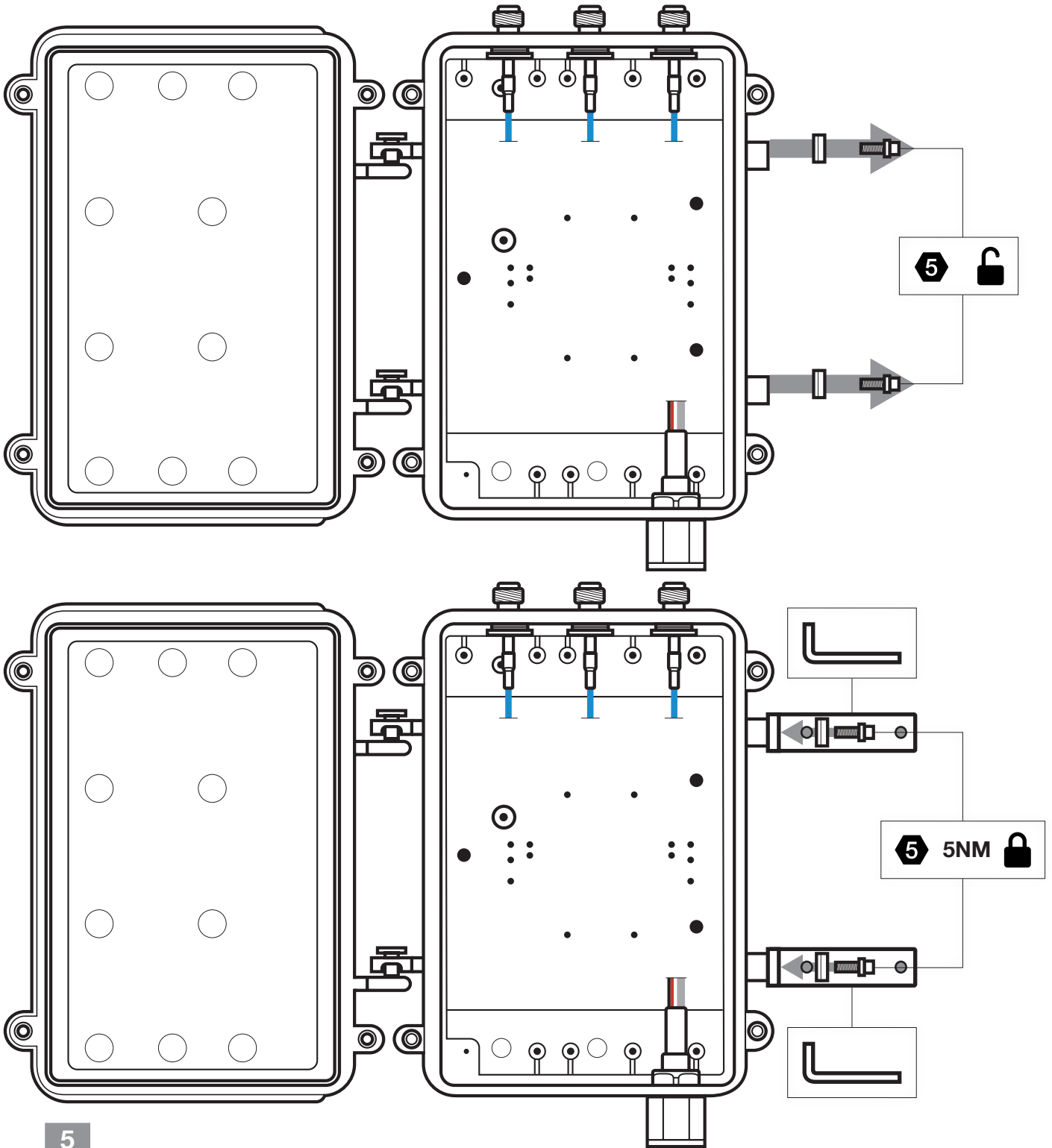
Antenna Ports Customisation



Note: For any unused port use or keep blanking plugin in place of the N-Type bulkhead connector.

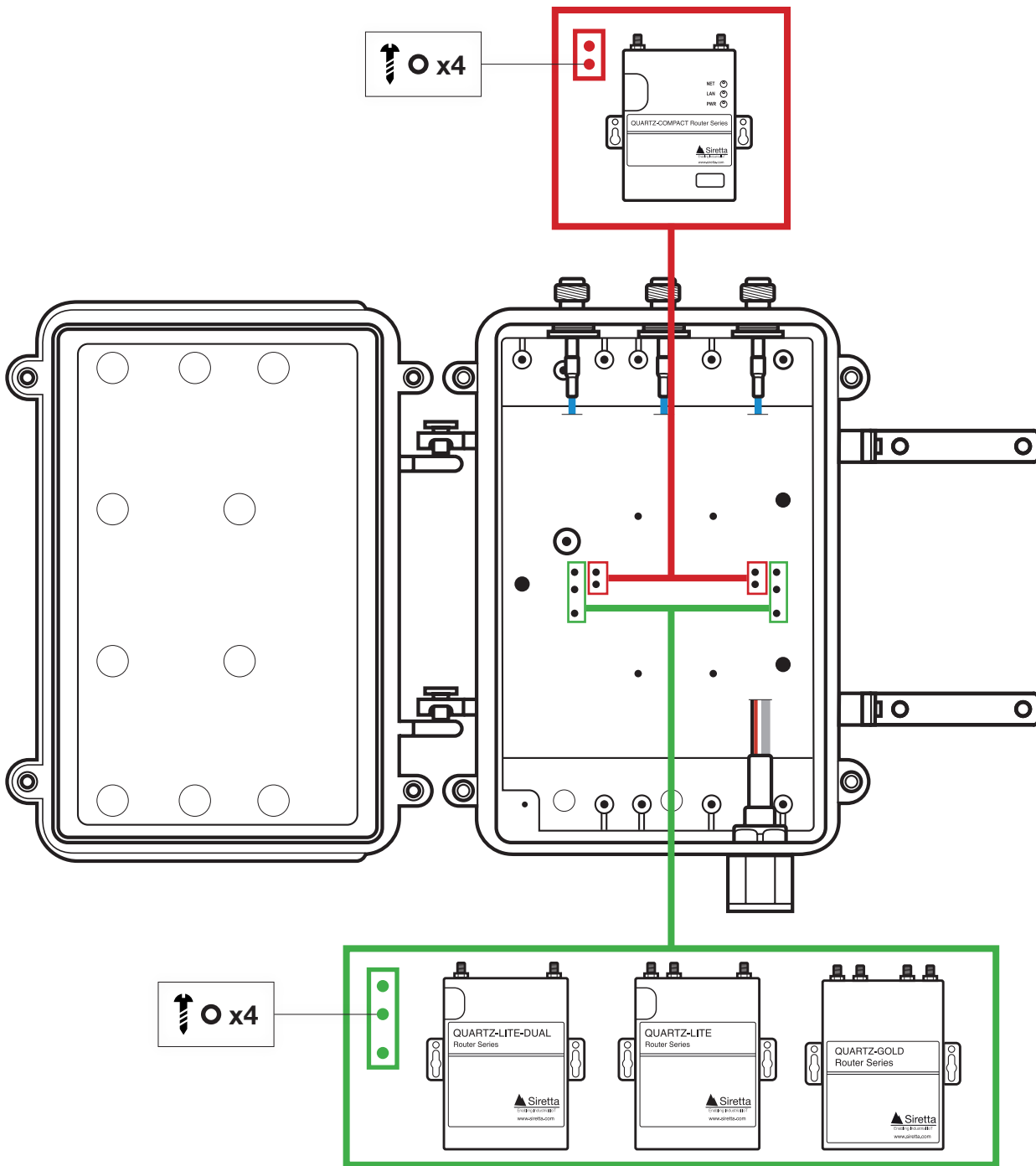


Install Mounting Brackets

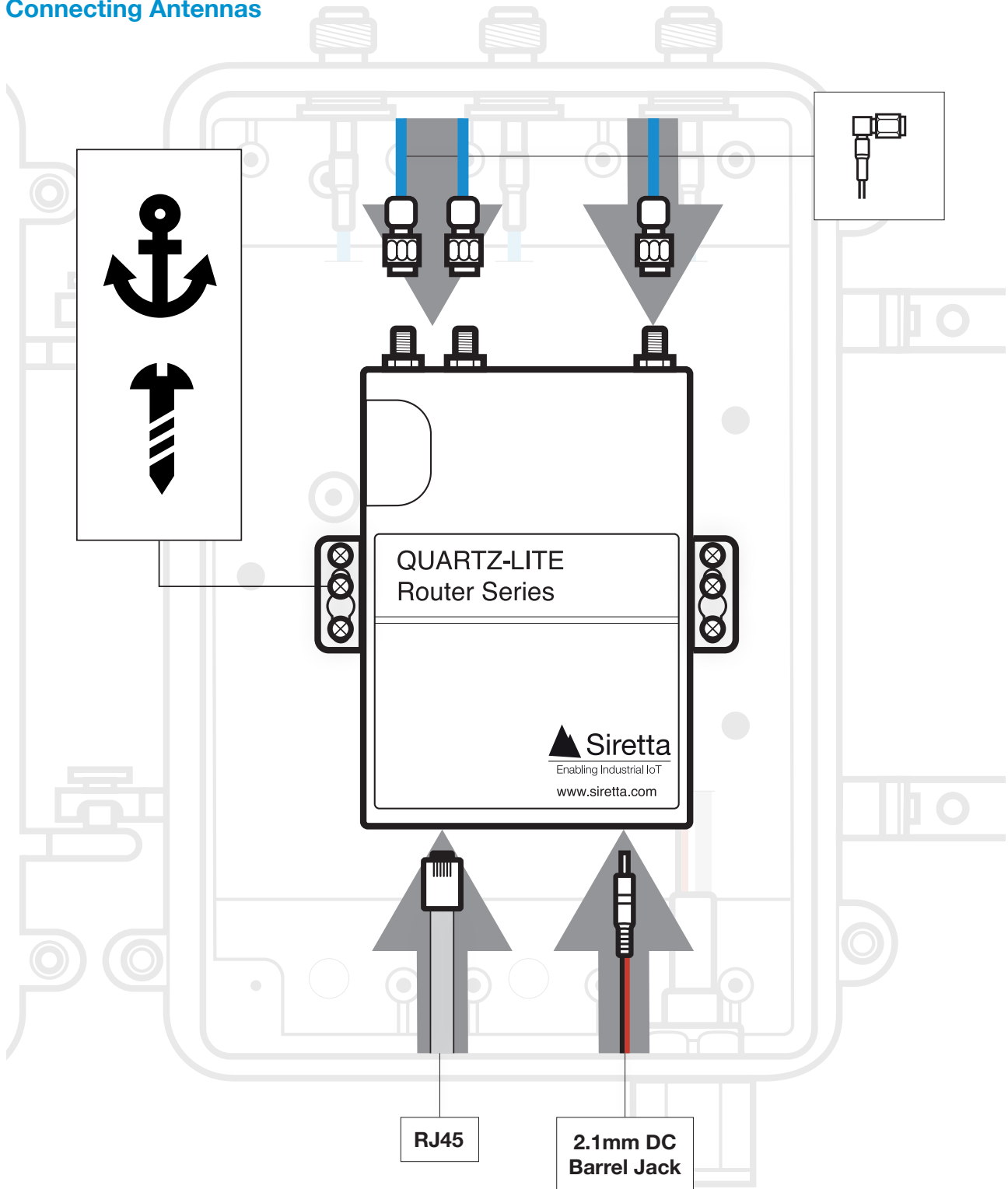


5

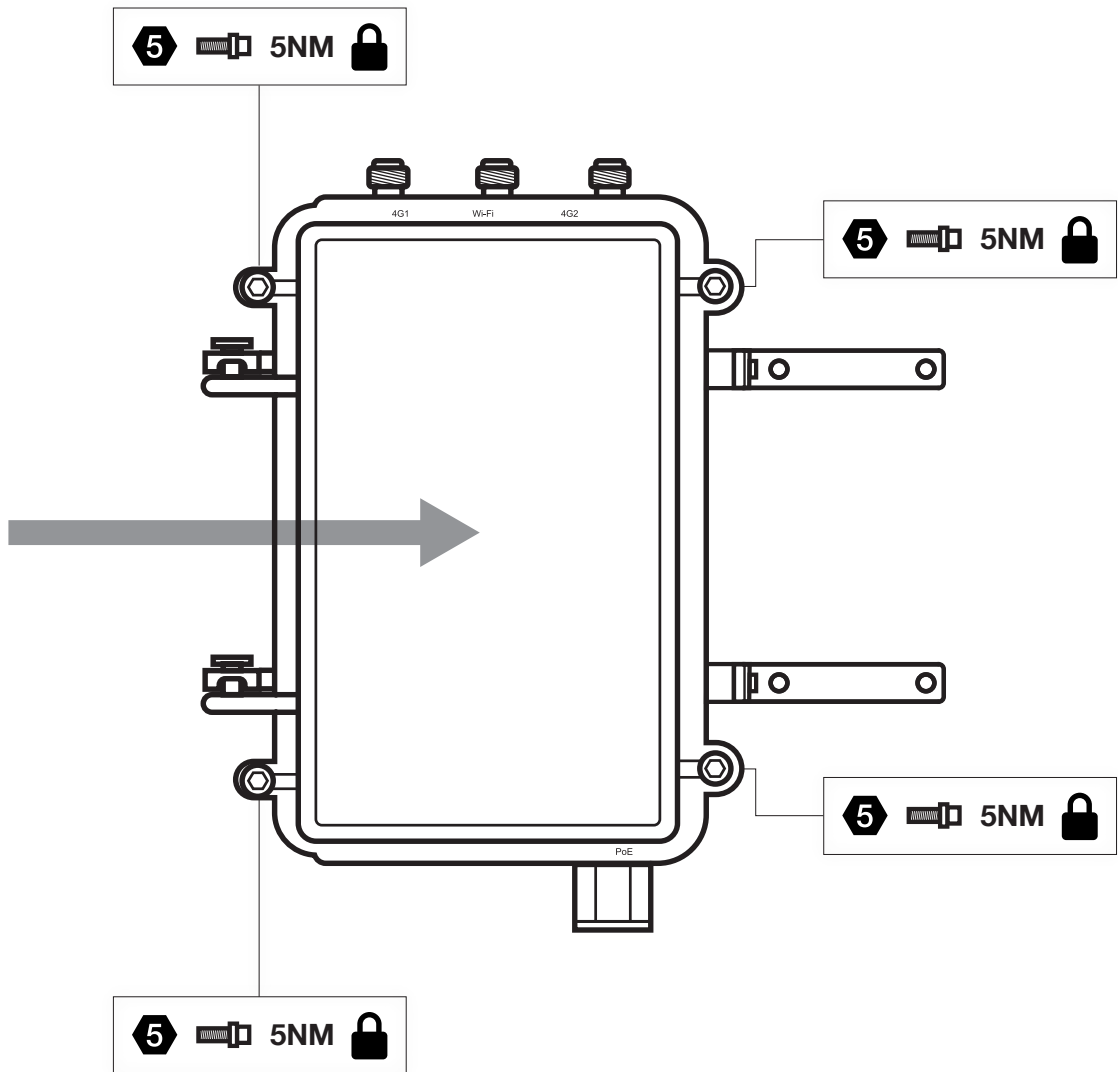
Install The Unit



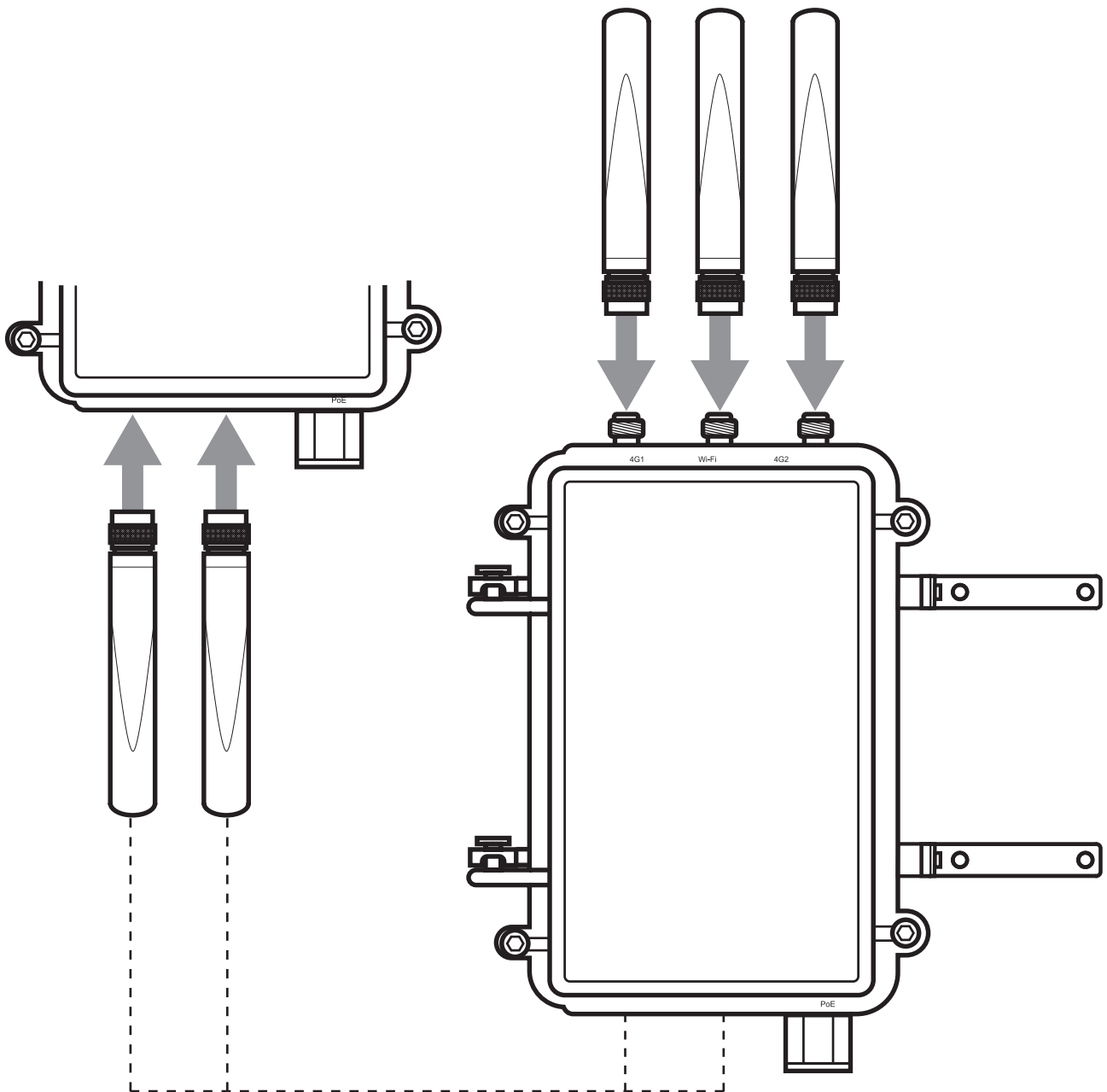
Connecting Antennas



Closing The Enclosure

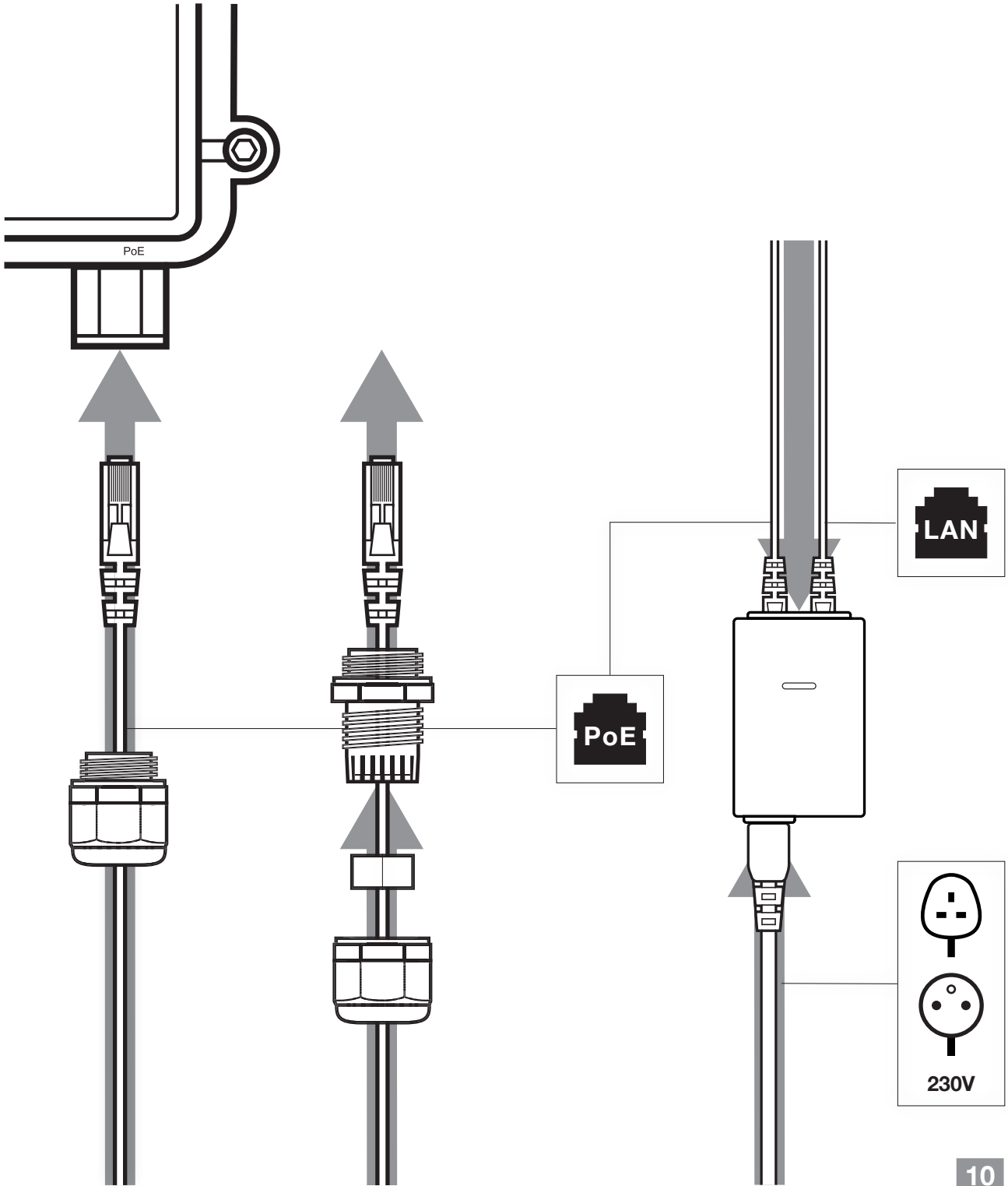


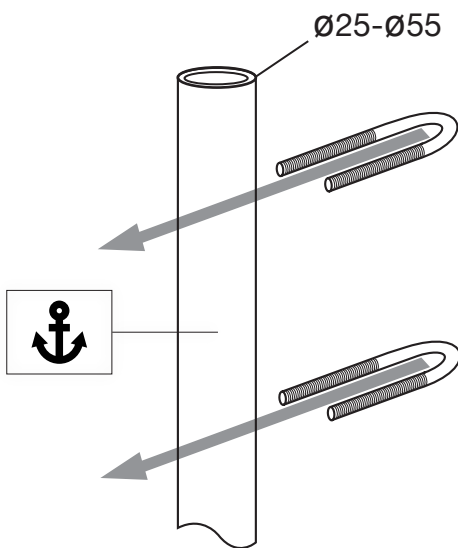
Mounting External Antennas



Optional: Attachment of antennas below the enclosure is also available. Follow the same steps starting from the [Antenna Ports Customisation](#) chapter (page 4) and apply them to the bottom of the enclosure.

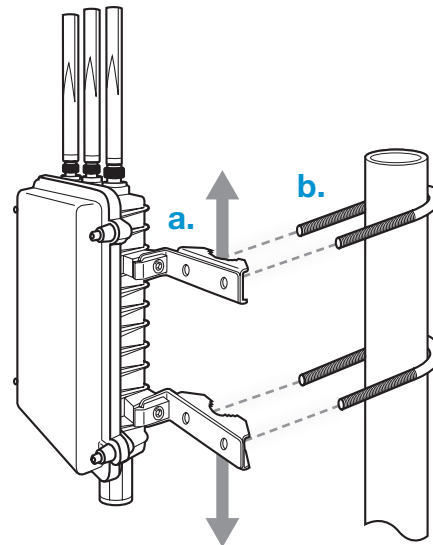
Power To Ethernet Connection





1. How to use the pole mount

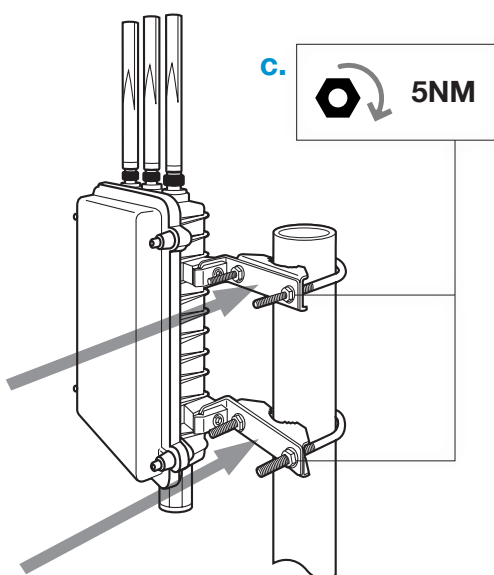
Pole Requirements: Ensure the pole is sturdy and securely anchored. The diameter should be compatible with the supplied clamp and U-bolt (between 25 - 55mm).



2. Attaching the Clamp and U-Bolt

Positioning the Clamp: Place the clamp around the pole at the desired height (a).

Securing the U-Bolt: Thread the U-bolt through the clamp and around the pole (b).



3. Installing the Enclosure

Attaching to the Clamp: Align the enclosure with the bracket (c), secure the L-bracket to the U-bolt using nuts.

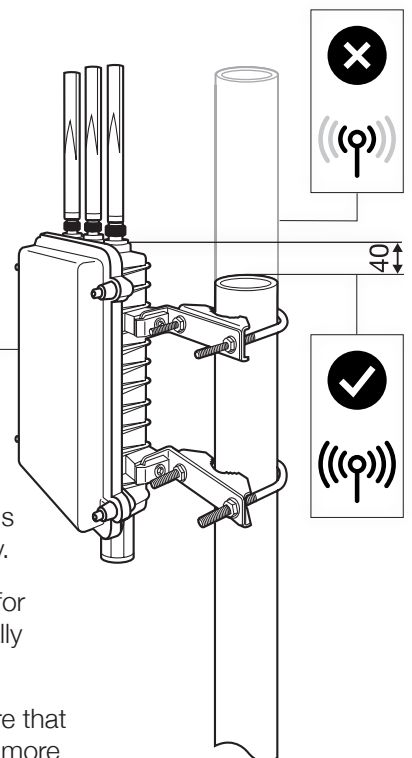


4. Post-Installation Check

Inspection: Confirm the enclosure is firmly mounted and aligned correctly.

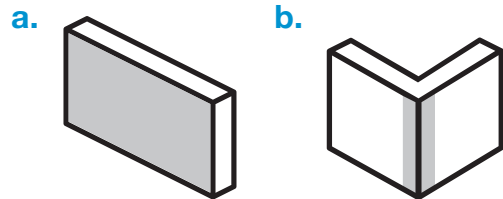
Maintenance: Periodically inspect for any looseness or corrosion, especially in harsh weather environments.

Positioning: For best results, ensure that the top of the pole does not extend more than 40mm below the L-shaped mount.



1. How to mount onto a wall or flat surface

Surface Selection: Ensure the chosen wall surface (a) or corner (b) is even and capable of supporting the enclosure weight. Avoid mounting near metallic objects or other antennas to reduce interference.



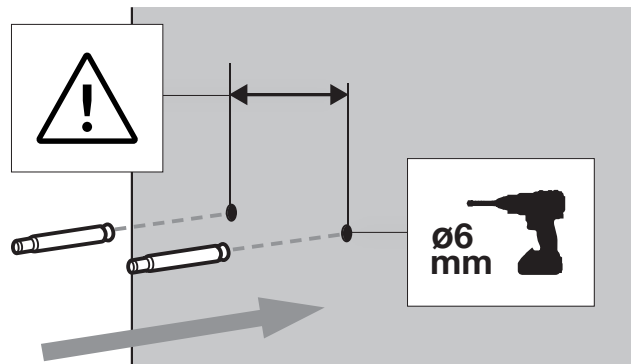
2. Preparing the Surface

Marking Drill Points: Using a level, mark two horizontal points 60mm apart where the holes will be drilled.

Drilling: Drill two 6mm diameter holes with a depth of 32–50 mm at the marked points. Be cautious to avoid any internal wiring or piping.

Inserting Frame Anchors:

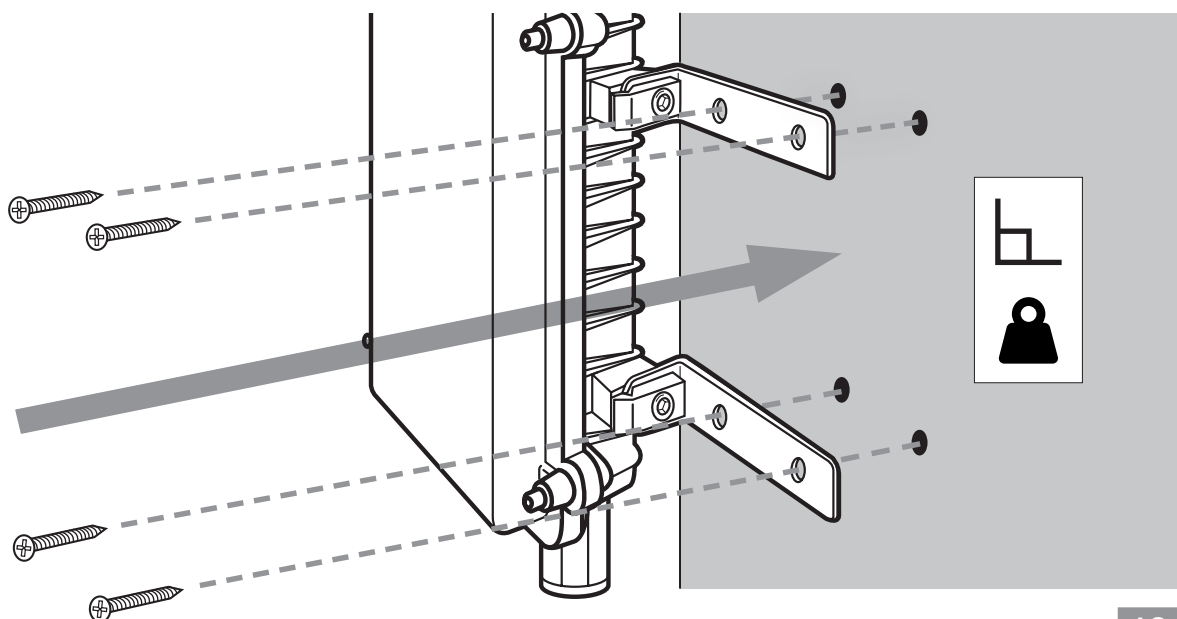
Place the frame anchors or wall plugs into the drilled holes.



3. Mounting the Antenna

Attaching the Bracket: Screw the M6 nut securing the enclosure to the bracket. Align the L-shaped bracket's holes with the frame anchors/wall plugs. Screw in the provided screws into the bracket holes and tighten securely.

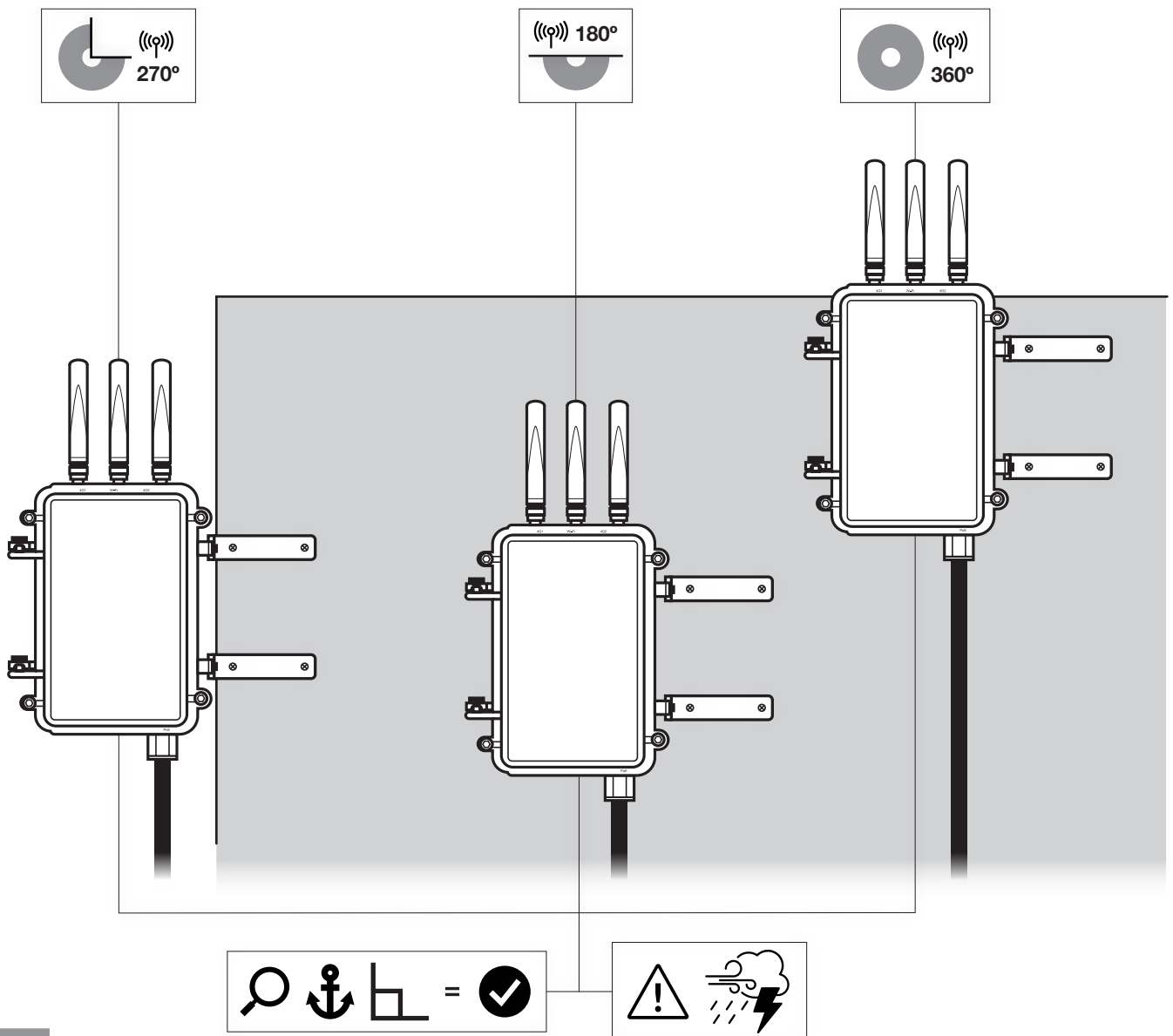
Final Adjustments: Ensure the antenna(s) are vertical and check for looseness, especially after strong winds and severe weather conditions.



4. Post-Installation Check

Inspection: Verify that the antenna(s) are securely attached and correctly aligned.

Maintenance: Regularly check the antenna for stability and signs of wear, especially after severe weather conditions.



Disclaimers and Waivers

Safety Disclaimer: The installation of this antenna should be carried out in accordance with local safety regulations. The manufacturer is not responsible for damages or injuries resulting from improper installation or use.

Professional Recommendation: For optimal performance and safety, we recommend installation by a qualified professional. Improper installation may void the warranty and could lead to poor performance or safety hazards.

Compliance Statement: Ensure compliance with all local building codes and electrical safety standards. The manufacturer is not liable for any violations of such regulations.

General/Ongoing Maintenance: Regular maintenance checks are essential for sustained performance and safety. Failure to conduct these checks could result in unexpected performance issues and safety risks.

Installation Confirmation: Upon installation, it is the responsibility of the installer to ensure that the antenna is securely mounted and functioning as intended. The manufacturer is not liable for issues arising from installation errors or oversights.



Enabling Industrial IoT

sales +44 (0)118 976 9000

email sales@siretta.com

www.siretta.com

Siretta Ltd
Basingstoke Road
Spencers Wood
Reading
Berkshire
RG7 1PW
United Kingdom

Company No. 08405712
VAT Registration No. GB163 04 0349

