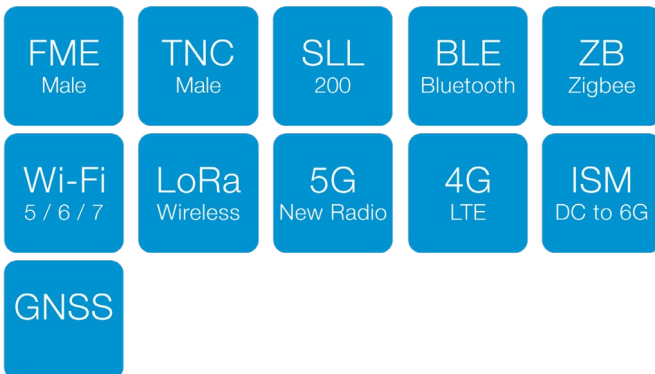


Low Loss (SLL200) Cable

FME-Male To TNC-Male



Key Features

- Connector 1: FME Male
- Connector 2: TNC Male
- Low Loss (SLL200) Coaxial Cable
- Impedance: 50Ω
- Lengths: 1M / 3M / 5M / 10M / 15M / 20M / 25M
- Suggested Working Frequency: DC to 6GHz

Typical Applications

- RF Patch Cable with FME(M) and TNC(M)
- Cellular Modules, Wi-Fi/Bluetooth Devices, Drones/Robotics, Medical Devices and Wearable Devices.

Environmental Specifications

- Operating Temperature: -40 to +90 °C
- RoHS and REACH compliant

Ordering Details:

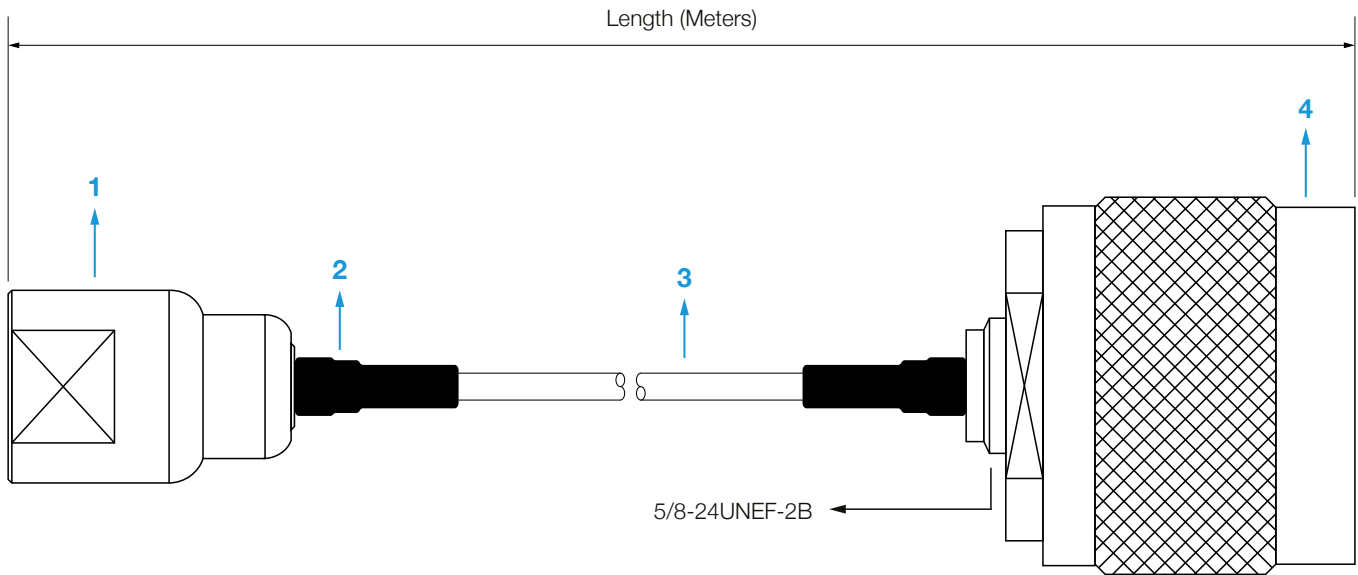
Part Number	Description
ASMZG100F058L13	FME(F) to TNC(M) 1 M Low Loss (SLL200) Cable Assembly
ASMZG300F058L13	FME(F) to TNC(M) 3 M Low Loss (SLL200) Cable Assembly
ASMZG500F058L13	FME(F) to TNC(M) 5 M Low Loss (SLL200) Cable Assembly
ASMZG1000F058L13	FME(F) to TNC(M) 10 M Low Loss (SLL200) Cable Assembly
ASMZG1500F058L13	FME(F) to TNC(M) 15 M Low Loss (SLL200) Cable Assembly
ASMZG2000F058L13	FME(F) to TNC(M) 20 M Low Loss (SLL200) Cable Assembly

Customisation Available: We also offer customisation of cable lengths to meet your specific requirements. Whether you need a shorter or longer cable, we can tailor the solution to fit your exact needs - siretta@sales.com

Low Loss (SLL200) Cable

FME-Male To TNC-Male

Dimensional Drawing



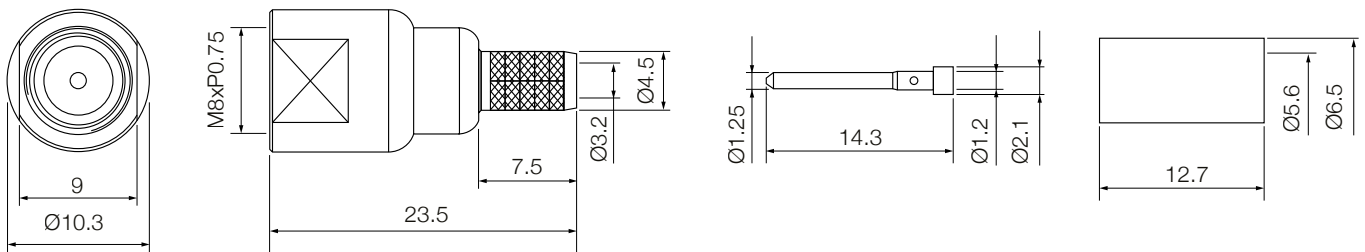
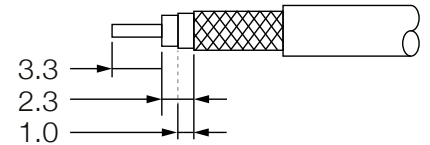
No.	Description	Quantity
1	FME Male	1
2	Heat Shrink (Black)	1
3	SLL200 Coaxial Cable	1
4	TNC Male	1

Low Loss (SLL200) Cable

FME-Male To TNC-Male

FME-Male Detailed Drawing

RECOMMENDED STRIP LENGTHS



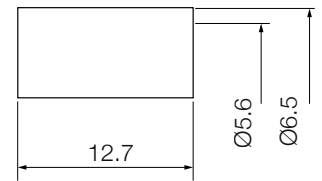
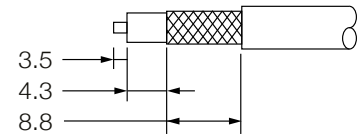
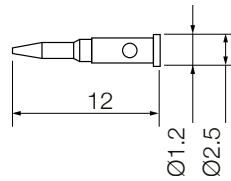
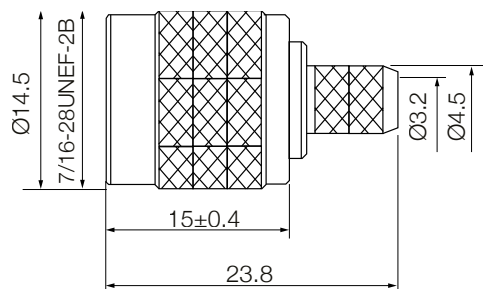
No.	Description	Material	Finish	Quantity
1	Body	Brass	Nickel	1
2	Insulator	Pom	None	1
3	Center Pin	Brass	Gold	1
4	Ferrule	Brass	Nickel	1

Low Loss (SLL200) Cable

FME-Male To TNC-Male

TNC-Male Detailed Drawing

RECOMMENDED STRIP LENGTHS

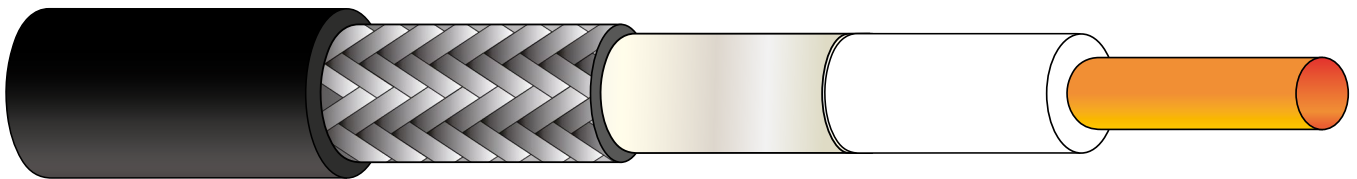
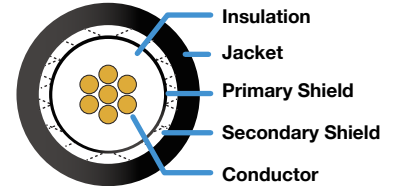


No.	Description	Material	Finish	Quantity
1	Shell	Brass	Nickel	1
2	Insulator	Teflon	None	1
3	Center Pin	Brass	Gold	1
4	Gasket	Silicone Rubber	Red	1
5	Washer	Brass	Nickel	1
6	Inner Retaining Ring	Brass	Nickel	1
7	Body	Brass	Nickel	1
8	Ferrule	Brass	Nickel	1

Low Loss (SLL200) Cable

FME-Male To TNC-Male

SLL200 Coaxial Cable Specification



Jacket	Secondary Shield	Primary Shield	Insulation	Conductor
Material PE	Material Tinned copper wire braid	Material Bonded Aluminium Foil	Material FEP	Material Bare copper
Colour Black	Average Thickness 0.295 mm	Average Thickness 0.06 mm	Average Thickness 0.22 mm	Diameter 1.12 mm
Average Thickness 0.645 mm	Coverage 90%		Colour White	
Diameter 4.95 mm	Diameter 3.66 mm	Diameter 3.07 mm	Diameter 2.95 mm	

Electrical Specifications

Impedance:	50±3 Ω
Return Loss:	> 20 dB
Screening Effectiveness:	> 90 dB
Capacitance:	80.3 pF/M
Velocity of Propagation	80.3%
Spark Test:	3 KV
Inner Conductor DCR:	17.6Ω/km
Outer Shield DCR:	16.1Ω/km
Voltage withstand:	1 KV



Low Loss (SLL200) Cable

FME-Male To TNC-Male

Physical Specifications

Operating Temperature Range:	-40°C ~ +85°C
Storage Temperature Range:	-40°C ~ +85°C
One Time Min, Bending Radius:	12.7 mm
Repeated Bending Radius:	50.8 mm

Attenuation (across frequency)

Frequency (MHz)	30	50	150	450	900	1500	1800	2000	2500	5800
dB/1m	0.058	0.075	0.131	0.228	0.326	0.424	0.466	0.493	0.554	0.865
dB/ft	0.018	0.023	0.040	0.069	0.099	0.129	0.142	0.150	0.169	0.264