



Inspired Wireless M2M Technology

COM Port Settings

Application Note 3
Rev 1.1

Table of Contents

	Page
Introduction	3
About Siretta	4
COM Port Settings	5
Disclaimer	9
Definitions	10

Introduction

This document is intended to explain the set up of a new COM port connection.

The procedures stated throughout this document are recommended by Siretta. You do not have to follow these procedures, however this may affect the way your COM port connection functions.

About Siretta

Siretta, located in Reading, United Kingdom have been manufacturing antennas, cable assemblies and cellular terminals for over 10 years. We supply our products globally to many of the world's leading organisations.

Whether you require an off the shelf or custom solution, Siretta has a wide portfolio of antenna, RF cable assemblies and terminals to fit your application.

Our extensive knowledge and experience in the wireless market allows us to support a wide range of customer applications, focusing on frequencies typically within the 75MHz - 5.8GHz range. These encompass the HF, VHF, ISM, GSM/GPRS/3G/4G and GPS frequencies as well as industrial WLAN and VHF/UHF antenna/Wi-Fi antenna solutions.

With a heavy emphasis on design, we have a team of dedicated Application Engineers and Product Managers, backed up by Field Sales Engineers, who specialise in wireless applications.

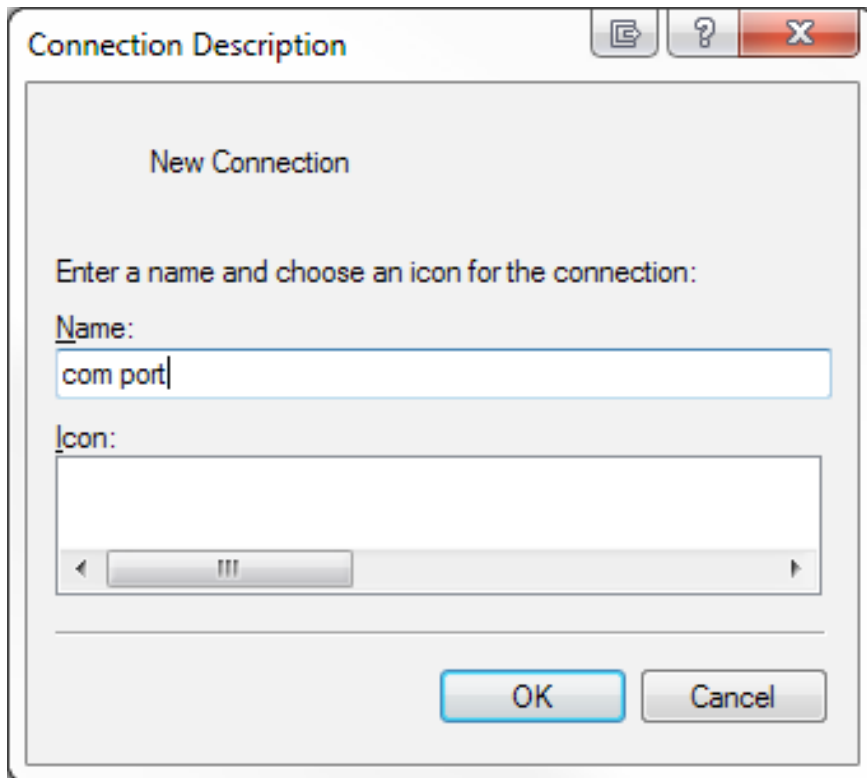
We have made significant investments in R&D facilities which boast GPS hardware development equipment and a GSM Pico Cell on site, as well as development software and a comprehensive suite of Industrial, Scientific and Medical band, and non ISM band frequency products. We have many technology partners enabling us to keep at the forefront of the communications industry and offer class leading wireless solutions.

COM Port Settings

Step 1. Open Hyperterminal (or your preferred terminal emulator)

Step 2. Select new connection

Step 3. Name your port



Step 4. Choose the correct COM port



com port

Enter details for the phone number that you want to dial:

Country/region: United Kingdom (44)

Area code: 01189

Phone number:

Connect using: COM1

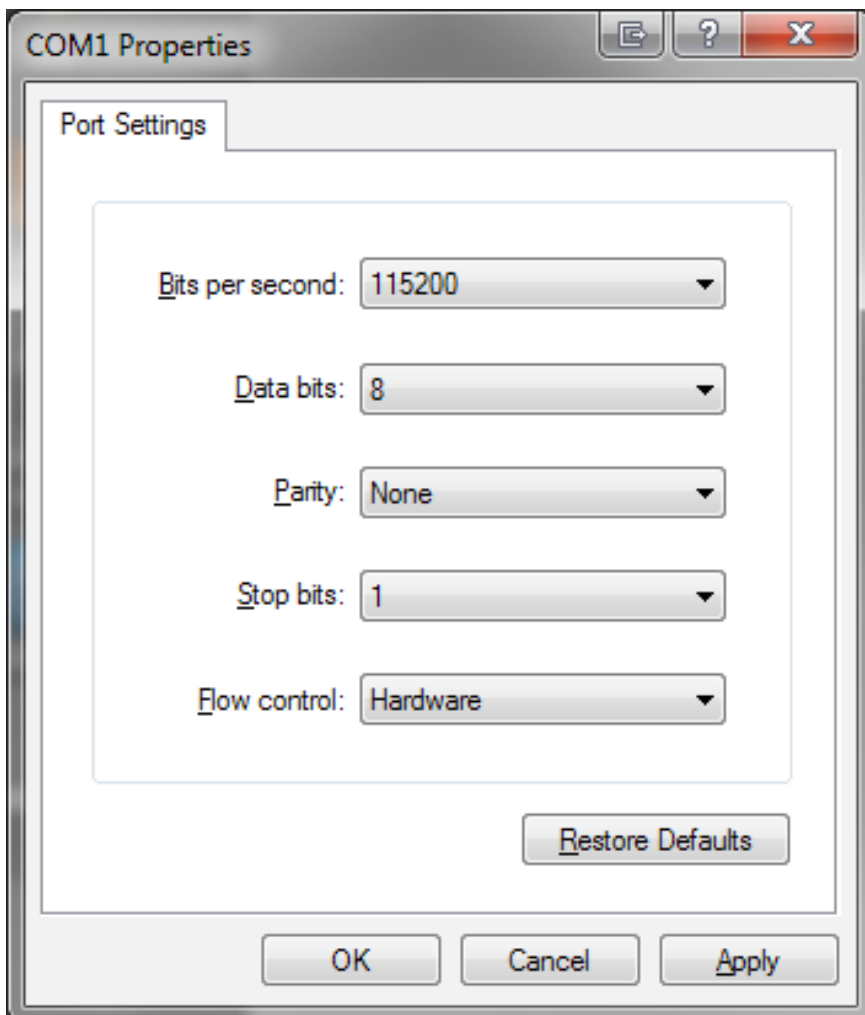
OK Cancel

COM Port Settings

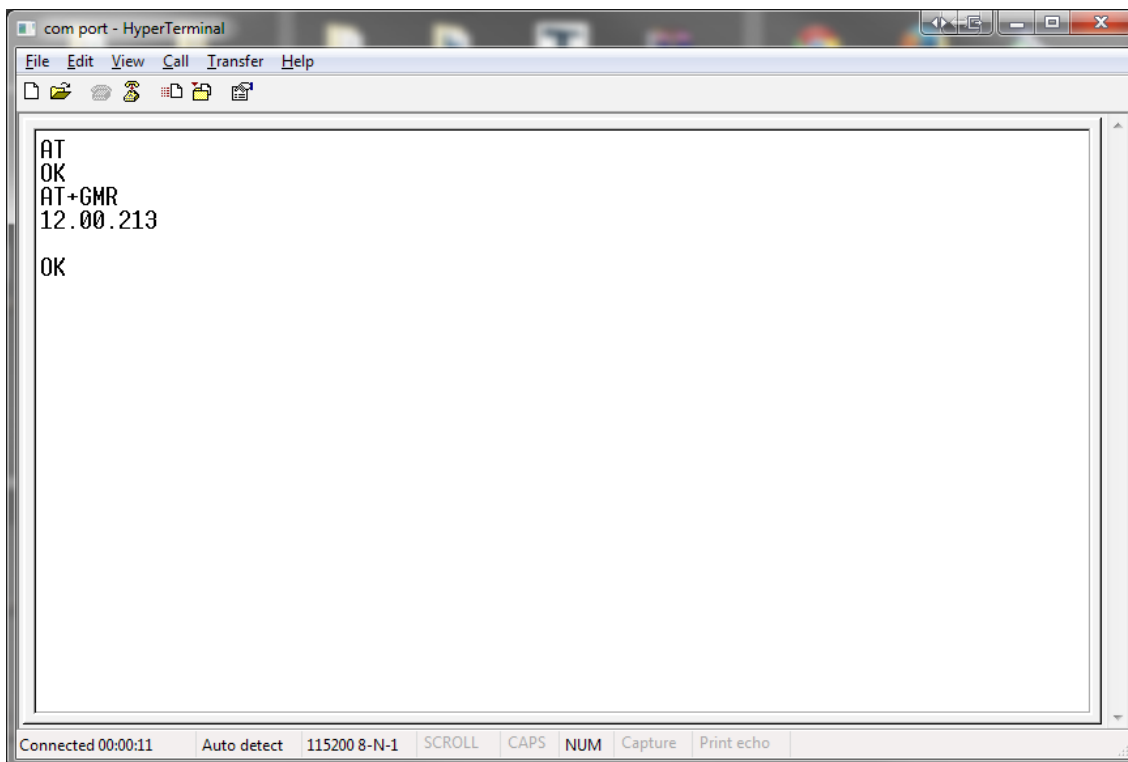
Application Note

Step 5. Configure the port with the following settings:

- » Bits per second: 115200
- » Data bits: 8
- » Parity: None
- » Stop bits: 1
- » Flow control: Hardware



Step 6. Send AT commands to the unit



```
com port - HyperTerminal
File Edit View Call Transfer Help
[Icons]
AT
OK
AT+GMR
12.00.213
OK
Connected 00:00:11 Auto detect 115200 8-N-1 SCROLL CAPS NUM Capture Print echo
```


Disclaimer

The information contained in this document is proprietary to Siretta Ltd. Siretta has made every effort to ensure that the accuracy of the information contained within this document is accurate. Siretta does not make any warranty as to the information contained within this document and does not accept any liability for any injury, loss or damage of any kind incurred by the use of this information.

Siretta does not take responsibility for any application developed using the device characterized in this document and notes that any application of this device must comply with the safety standards of the applicable country and comply with the relevant wiring rules. Siretta reserves the right to make modifications, additions and deletions to this document due to typographical errors, inaccurate information, or improvements to equipment at any time and without notice. Such changes will be incorporated into new editions of this document.

All rights reserved.

© 2017 Siretta Ltd

Definitions

Term	Definition
AT	Attention command
COM	Communication



sales +44 (0)118 976 9014
fax +44 (0)118 976 9020
accounts +44 (0)118 976 9069
email sales@siretta.co.uk

www.siretta.co.uk

Siretta Ltd
Basingstoke Road
Spencers Wood
Reading
Berkshire
RG7 1PW
United Kingdom

Company No. 08405712
VAT Registration No. GB163 04 0349

A member of the Olancha Group Ltd



Rev 1.1 - Jan 2017