

Materials Supplied:

- 1x silicone rubber inner seal
- 1x flat washer
- 1x M17 nut

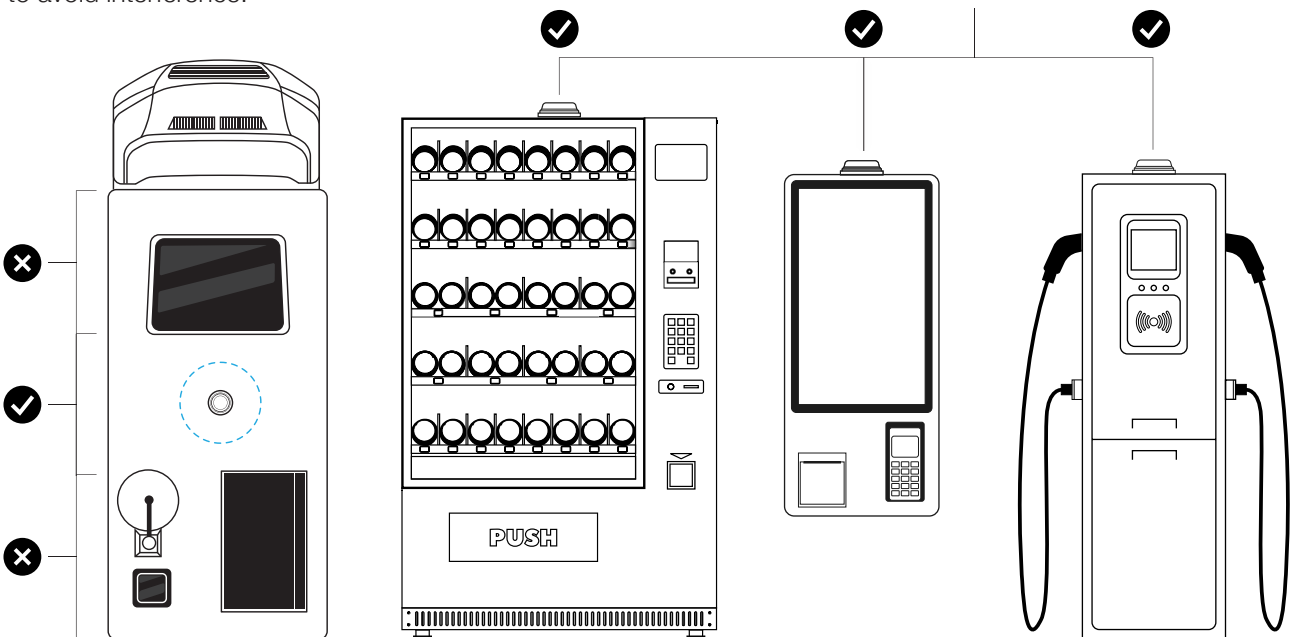
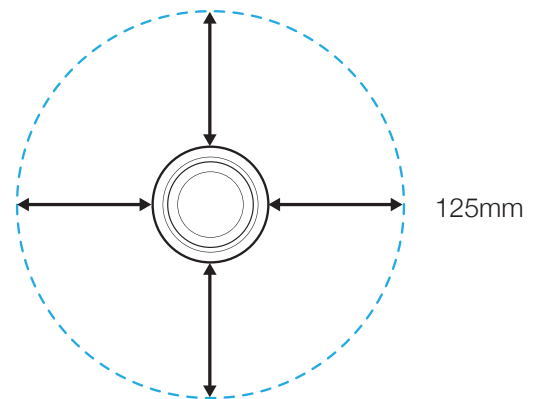
Required Tools: Drill, 18mm drill bit, 19mm spanner or adjustable wrench, deburring tool, masking tape, pencil or marker

1. Choosing mounting surface

Surface Selection: The Tango 44 is ground plane independent, however for optimal performance, it is recommended to mount the antenna on a conductive metal panel that extends at least 12.5 cm in all directions.

When installing on a vehicle roof panel, it's important to choose a flat surface. Aim for a central position.

Keep the antenna as far from other roof-mounted items such as the air conditioning unit, light bars, etc., to avoid interference.



2. Preparation:

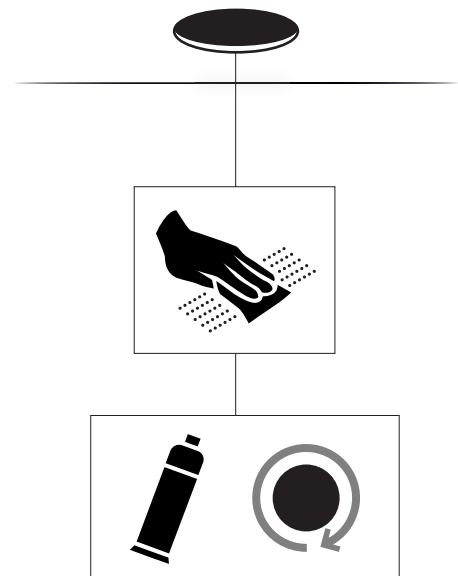
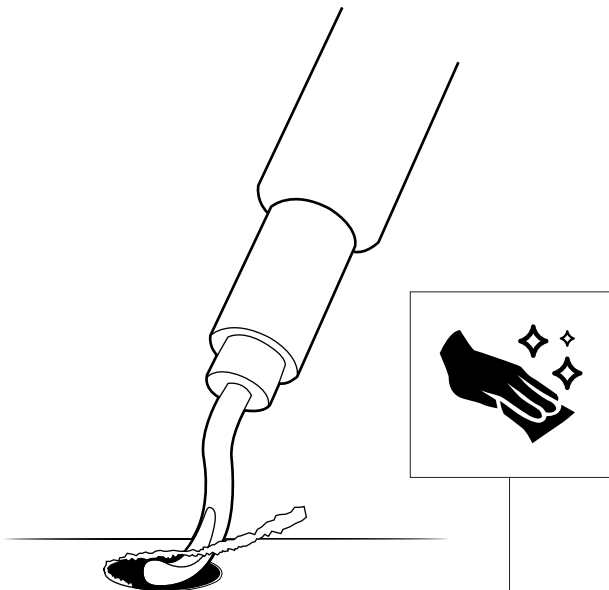
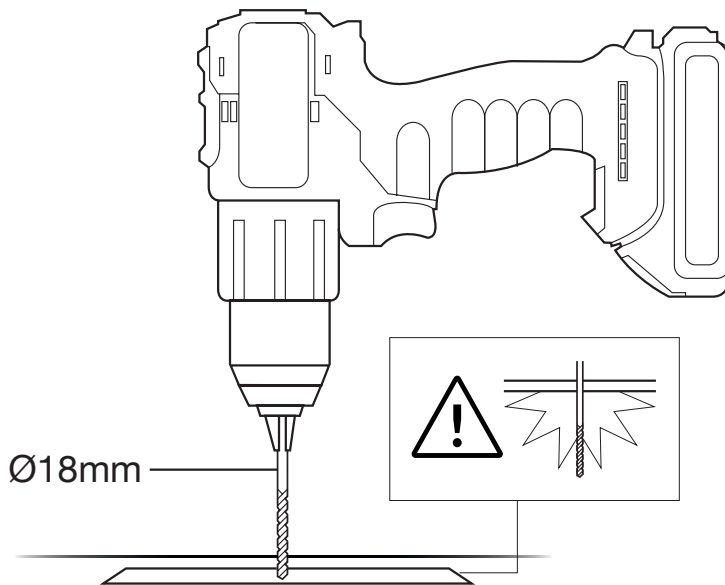
Preparing the Surface: Mask the chosen mounting area to safeguard the surface.

Start with a pilot hole at the desired location. Gradually enlarge the hole size until it is Ø18 mm in diameter.

Be cautious while drilling, especially in a vehicle, to avoid damaging any underlying structures, like the headliner.

After drilling, deburr and clean the area around the hole meticulously, ensuring all waste is removed.

Strip the paint and primer from the under-panel surface. This step ensures proper contact for grounding with the washer and nut. To prevent rust or corrosion, apply petroleum jelly or paint around the cut edge of the hole.



3. Installation:

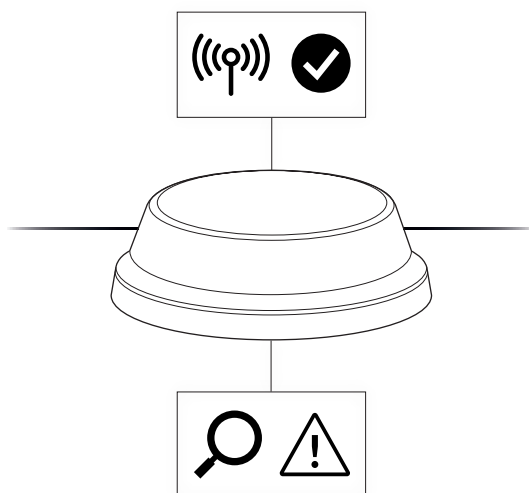
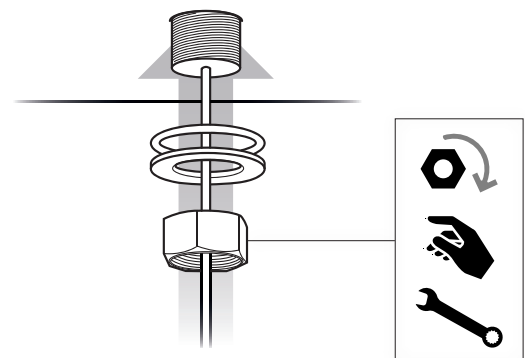
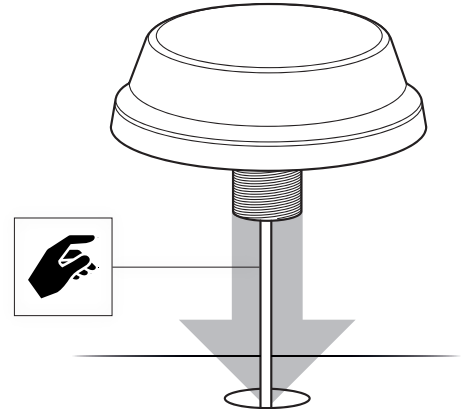
Feeding the Cable: Carefully feed the cable of the Tango 44 through the hole you prepared

Mounting the Antenna: Position the threaded part of the antenna through the hole, ensuring it protrudes adequately from the other side.

Securing the Antenna: On the underside of the mounting surface (or inside the vehicle if mounted on a roof), slide the washer onto the protruding threaded section.

Next, twist the nut onto the thread by hand. Once it's threaded correctly, use a spanner or appropriate tool to secure it in place. Make sure it's secure but avoid over-tightening, which could damage the antenna or mounting surface.

After securing the antenna, give it a gentle tug to ensure that it's firmly anchored.



4. Post-Installation:

Inspection: After installation, inspect the antenna's positioning to confirm that it's not obstructed by any surrounding features and that it's secure.

Maintenance: Periodically check the antenna for any signs of wear or loosening. If you notice any issues, address them immediately to maintain optimal performance.

Disclaimers and Waivers

Safety Disclaimer: The installation of this antenna should be carried out in accordance with local safety regulations. The manufacturer is not responsible for damages or injuries resulting from improper installation or use.

Professional Recommendation: For optimal performance and safety, we recommend installation by a qualified professional. Improper installation may void the warranty and could lead to poor performance or safety hazards.

Compliance Statement: Ensure compliance with all local building codes and electrical safety standards. The manufacturer is not liable for any violations of such regulations.

General/Ongoing Maintenance: Regular maintenance checks are essential for sustained performance and safety. Failure to conduct these checks could result in unexpected performance issues and safety risks.

Installation Confirmation: Upon installation, it is the responsibility of the installer to ensure that the antenna is securely mounted and functioning as intended. The manufacturer is not liable for issues arising from installation errors or oversights.